

Intro to Transition

Transitioning into life beyond high school can often be an intimidating and challenging process, especially if you have a disability. Planning ahead can ensure an easier and more successful transition. The DC Rehabilitation Services Administration (RSA) will work with you, your schools, and your families to help prepare you for long-term employment.



What is our role in helping you transition from school to adult life?

Do you have an Individualized Education Program (IEP), a 504 plan, a disability?
Are you attending high school?
Do you want to work?

You can make it happen and we can help.

- We can begin to work with you while you are still in school.
- We will work with you one-on-one to help you reach your employment goal.
- We will help you choose individualized support services and career options that match your interests, strengths and abilities.

1 Open Your Case with DDS RSA



KEY QUESTIONS

- Do you want to work?
- Will you benefit from receiving services?
- Do you have all of your required documents or do you need help getting them?

YOUR CHOICES

Provide consent for RSA to view your disability records and bring the required paperwork to your meeting. RSA will help you get any documents you are missing.

2 Explore What You Want To Be



KEY QUESTIONS

- How does your disability impact your work?
- What types of jobs interest you?
- What are your skills and abilities?
- How will your desired job impact your benefits?

YOUR CHOICES

It is your preferences that are important, and your Vocational Rehabilitation (VR) Specialist can help you find answers to these questions.

3 Develop Your Plan



KEY QUESTIONS

- What is your employment goal?
- What skills are needed for your desired job?
- Do you need to go to college, a vocational training program, a resumé building workshop, an internship?
- What types of services, including assistive technology, can help you and who provides these services?

YOUR CHOICES

You and your VR Specialist will work together to develop your Individualized Plan for Employment (IPE), which includes your employment goal, services you will receive, and who will provide these services.

4 Prepare for Employment



KEY QUESTIONS

- What skill sets do you need to develop or refine to achieve your employment goal?
- Do you know how to access career preparation activities available in your school or in the community (workshops, trainings, etc.)?

YOUR CHOICES

It is up to you to participate when you receive services. Follow-up with your VR Specialist to let him/her know if something is not working or if you need additional help.

5 Search for Jobs & Get Hired



KEY QUESTIONS

- Do you need help from Job Placement staff at RSA?
- Is your job consistent with what is in your IPE?
- Are you satisfied with your job?
- Do you need help with anything to perform your job?

YOUR CHOICES

It is up to you to search and apply for jobs, but RSA is here to help. Follow-up with your VR Specialist about how your job search is going. Ask about post-employment services if you need help in the future to maintain your job. You can reapply to RSA at any time.

“Go after what you believe in. RSA looks at each individual and sees what you need. They helped me to come up with a solution to achieve what I wanted.”

Vander Cherry
Client of DDS RSA (received services from DCRSA through VR Specialist Shonda Pertilla)

“If you plan now, it will lead to great things and will help make your goals attainable.”

Cheryl Thorpe
Transition Specialist, DDS RSA

“You will get out of RSA what you put in.”

Frank Van Atta
Employment Coordinator, DDS RSA

“My job is to support you and look at all your interests and desires, and help cultivate a realistic and fulfilling career path in which you will succeed.”

Jessica Okanlawon
Vocational Rehabilitation Specialist, DDS RSA

What services are available?

The specific support services you receive from RSA are individualized and based on your career goals. Examples:

- Career counseling & guidance
- Work-related training and education
- Assistive technology devices
- Transportation allowances
- Job coaching and placement



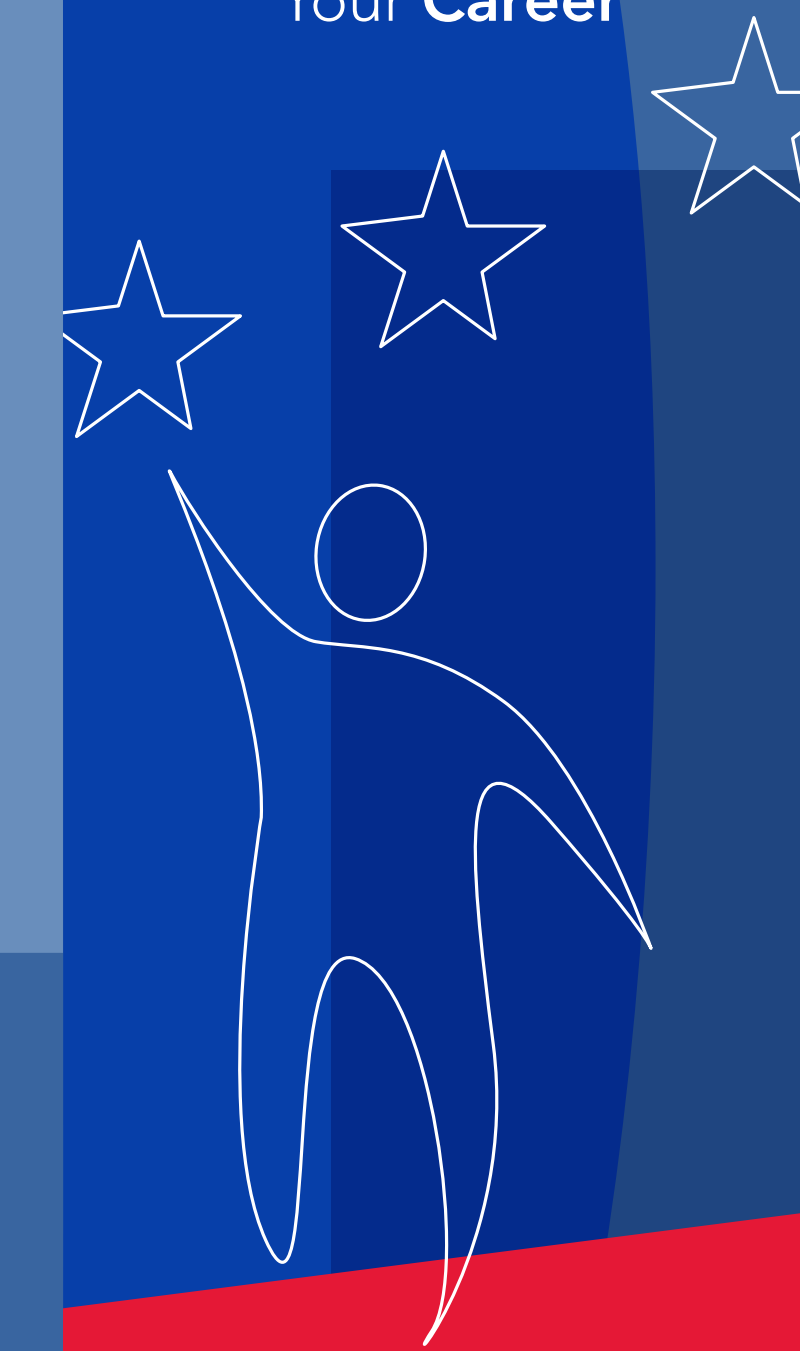
Your Responsibilities

- Actively participate through informed choice in identifying your employment goal and service providers
- Provide relevant and requested information
- Stay in contact with your VR Specialist

EXPLORE DISCOVER

EXPLORE
The World of **Work**

DISCOVER
Your **Career**



DISTRICT OF COLUMBIA
REHABILITATION
SERVICES ADMINISTRATION

1125 15th St. N.W., 9th Floor,
Washington, DC 20005

PHONE: 202-442-8400 • TTY: 202-442-8613

OFFICE HOURS

Monday through Friday from 8:15 am – 4:45 pm

dds.dc.gov

EXPLORE

The World of **Work**

DISCOVER

Your **Career**





Intro to Transition

Transitioning into life beyond high school can often be an intimidating and challenging process, especially if you have a disability. Planning ahead can ensure an easier and more successful transition. The DC Rehabilitation Services Administration (RSA) will work with you, your schools, and your families to help prepare you for long-term employment.



What is our role in helping you transition from school to adult life?

Do you have an Individualized Education Program (IEP), a 504 plan, a disability?
Are you attending high school?
Do you want to work?

You can make it happen and we can help.

- We can begin to work with you while you are still in school.
- We will work with you one-on-one to help you reach your employment goal.
- We will help you choose individualized support services and career options that match your interests, strengths and abilities.



1

Open Your Case with DDS RSA



KEY QUESTIONS

- Do you want to work?
- Will you benefit from receiving services?
- Do you have all of your required documents or do you need help getting them?



YOUR CHOICES

Provide consent for RSA to view your disability records and bring the required paperwork to your meeting. RSA will help you get any documents you are missing.



2

Explore What You Want To Be



KEY QUESTIONS

- How does your disability impact your work?
- What types of jobs interest you?
- What are your skills and abilities?
- How will your desired job impact your benefits?

YOUR CHOICES

It is your preferences that are important, and your Vocational Rehabilitation (VR) Specialist can help you find answers to these questions.



3 Develop Your Plan



KEY QUESTIONS

- What is your employment goal?
- What skills are needed for your desired job?
- Do you need to go to college, a vocational training program, a resumé building workshop, an internship?
- What types of services, including assistive technology, can help you and who provides these services?

YOUR CHOICES

You and your VR Specialist will work together to develop your Individualized Plan for Employment (IPE), which includes your employment goal, services you will receive, and who will provide these services.



4

Prepare for Employment



KEY QUESTIONS

- What skill sets do you need to develop or refine to achieve your employment goal?
- Do you know how to access career preparation activities available in your school or in the community (workshops, trainings, etc.)?

YOUR CHOICES

It is up to you to participate when you receive services. Follow-up with your VR Specialist to let him/her know if something is not working or if you need additional help.



5

Search for Jobs & Get Hired



KEY QUESTIONS

- Do you need help from Job Placement staff at RSA?
- Is your job consistent with what is in your IPE?
- Are you satisfied with your job?
- Do you need help with anything to perform your job?



YOUR CHOICES

It is up to you to search and apply for jobs, but RSA is here to help. Follow-up with your VR Specialist about how your job search is going. Ask about post-employment services if you need help in the future to maintain your job. You can reapply to RSA at any time.

“Go after what you believe in. RSA looks at each individual and sees what you need. They helped me to come up with a solution to achieve what I wanted.”

Vander Cherry
Client of DDS RSA (received services from DCRSA through VR Specialist Shonda Pertilla)

“If you plan now, it will lead to great things and will help make your goals attainable.”

Cheryl Thorpe
Transition Specialist, DDS RSA

“You will get out of RSA what you put in.”

Frank Van Atta
Employment Coordinator, DDS RSA

“My job is to support you and look at all your interests and desires, and help cultivate a realistic and fulfilling career path in which you will succeed.”

Jessica Okanlawon
Vocational Rehabilitation Specialist, DDS RSA



What services are available?

The specific support services you receive from RSA are individualized and based on your career goals. Examples:

- Career counseling & guidance
- Work-related training and education
- Assistive technology devices
- Transportation allowances
- Job coaching and placement



Your Responsibilities

- Actively participate through informed choice in identifying your employment goal and service providers
- Provide relevant and requested information
- Stay in contact with your VR Specialist



DISTRICT OF COLUMBIA
REHABILITATION
SERVICES ADMINISTRATION

1125 15th St. N.W., 9th Floor,
Washington, DC 20005

PHONE: 202-442-8400 • TTY: 202-442-8613

OFFICE HOURS

Monday through Friday from 8:15 am – 4:45 pm

dds.dc.gov

EX

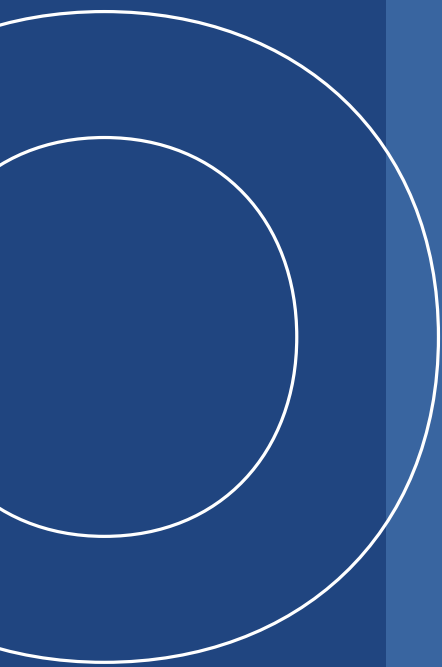
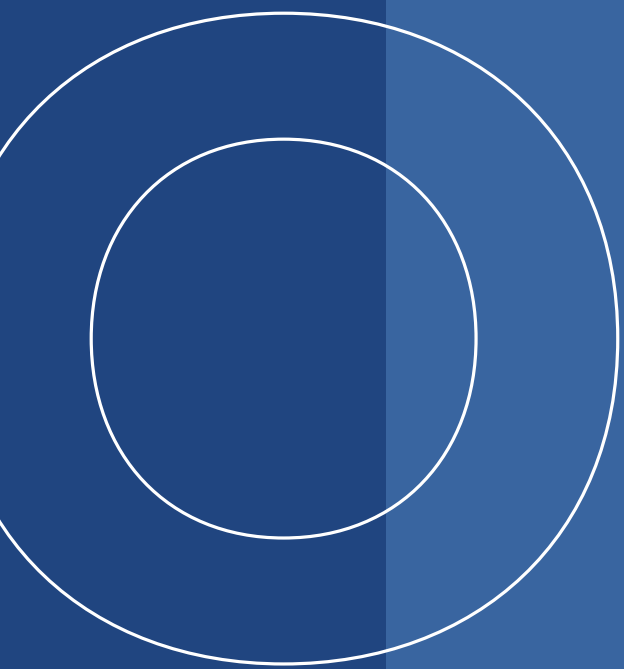
D

MARKET

ISSUE

PL

CE



DR

RE



DR